

Report of the Director of Environment and Neighbourhoods

Outer North West Area Committee

Date: 14th December 2009

Subject: Community Safety Annual Report 2009

<p>Electoral Wards Affected:</p> <p>Adel & Wharfedale Guiseley & Rawdon Horsforth Otley & Yeadon</p> <p><input type="checkbox"/> Ward Members consulted (referred to in report)</p>	<p>Specific Implications For:</p> <p>Equality and Diversity <input type="checkbox"/></p> <p>Community Cohesion <input type="checkbox"/></p> <p>Narrowing the Gap <input type="checkbox"/></p>
<p>Council Function <input type="checkbox"/></p>	<p>Delegated Executive Function available for Call In <input checked="" type="checkbox"/></p> <p>Delegated Executive Function not available for Call In Details set out in the report <input type="checkbox"/></p>

Executive Summary

This report provides details of crime statistics during the period April 2004 to March 2009, and highlights key activities during this period.

1.0 Purpose of this Report

- .1 This report is the annual community safety update report, providing details about crime trends between April 2004 and March 2009, highlighting key activities during this period.

2.0 Background Information

2.2 It should be noted that a number of factors have a bearing on crime; these can be placed in 3 broad categories:

- A suitable target or opportunity
High value items which can be removed relatively easily, vulnerable premises or people, unlocked doors or windows, etc
- A motivated offender
someone whose values or beliefs make stealing / violence acceptable, drug dependency, someone motivated by greed, etc
- A low likelihood of getting caught
no police or security patrols, a neighbourhood with a culture of low reporting of crime, no natural street surveillance, properties obscured by overgrown bushes, etc

2.3 Traditional problem solving techniques aim to reduce crime by impacting on these categories:

- working to educate the victim (leaflets, crime reduction advice, etc)
- tackle the offender (known as offender management - Cautions, Criminal Sanctions, tenancy enforcement, etc)
- undertake environmental works (cut back hedges, fit additional locks, alleygates, etc)

However, it should be acknowledged that other factors also have a bearing on crime:

- Season
- Weather
- Release of offenders
- Location
- Population

2.4 It is also important to note that one offender can commit many offences in a short period of time and this can lead to significant increases in the figures. For example, where cars are damaged along a whole street there maybe 6 cars damaged and this would lead to 6 reports of criminal damage.

3.0 Summary of Key Actions

The following key actions have been delivered during the last 12 months to tackle crime and anti social behaviour.

3.1 Operation Champion

This is a multi agency operation aimed at tackling crime, asb and environmental issues within an agreed area. A number of agencies come together to focus their activity in this area, joining together to have a greater impact. During the last 12 months, 2 Operation Champions have been held in the Outer area focusing on Holt Park (December 2008) and Horsforth (August 2009). A further 2 Operation Champions are scheduled during the next 12 months (December 2009 and June 2010). These operations will be supplemented by action days as required. During this period action days were held in Otley (Weston Estate) and Yeadon (Henshaws).

3.2 Designated Public Places Orders (DPPOs)

DPPOs were introduced in Horsforth and Guiseley on 1st December 2007. Subsequent orders have been introduced in Otley and Yeadon on 1st April 2008. A Designated Public Places Order provides the Police with additional powers to confiscate alcohol within a defined area. Where an order exists the Police have the powers to confiscate alcohol that is being consumed or that is thought likely to be consumed (unopened bottles / cans). Failure to comply with a Police request in this regard could lead to a fine or arrest. Feedback from the Police shows that these orders are working well and are enforced by Officers policing the town centres.

3.3 Multi Agency Tasking

This group examines the key tactical priorities for the Outer North West area and agree actions to tackle these priorities. Work undertaken through this group includes organising multi agency action days, case conferences about specific families / individuals and commitments to deliver or contribute to specific projects (eg. Promoting target hardening by door knocking in a neighbourhood, crime prevention articles in newsletters, etc). Agencies involved in this group include: Area management (Co-chair), Police (Co-chair), Safer Leeds, West North West Homes, Youth service, Attendance Management, Environmental Action Team and the ASB Unit. The group meets monthly and its work is managed through an action plan.

3.4 Offender Management

Research and experience has shown that a small number of determined criminals are involved in a large portion of crime. Some studies have reported that 20% of criminals commit as much as 80% of crime. It, therefore, follows that rather than concentrating time and other resources on the large volume that come through the judicial system and never offend again, that attention should be concentrated on this small proportion of prolific offenders. The Police and other agencies come together to problem solve and manage these offenders through visits, targeted intelligence gathering, focused attention (eg discussions when out in the street), use of ASB Orders and through partner agencies powers, for example, use of tenancy enforcement for ALMO tenants.

3.5 Community Safety Metal Poster Frames

These frames were purchased through a well being application in 2005/06. The frames are targeted to key areas to tackle specific crimes; examples include deployment in car parks where cars have been broken into with posters about car crime. The Area Committee contributed £1,000 towards this project and the Police pick up the costs of new posters and moving the frames.

3.6 Off Road Motor Cycles

The deployment and cost of these vehicles is shared equally amongst the four Area management Committees (£4,500 per Area Committee for 3 years). The Off-road motor cycles are deployed across the division to green spaces or to target specific problems with off-road motorbikes. The vehicles are effective in reducing asb and low level crime, particularly on green spaces and providing reassurance to those using the parks and green spaces. The vehicles have also been used during specific initiatives such as Operation Champion or more specific focused initiatives in conjunction with the Council's Park Ranger Service.

3.7 CASAC Target Hardening

This initiative is delivered across all 4 Outer North West Wards and provides additional door locks, window locks, spy holes, chains and general crime prevention advice to householders. The Police help target this service to areas where burglary is an issue and PCSOs help to door knock and promote this service. £40,000 of wellbeing funding allocated to this project will provide this service to over 400 properties.

3.8 ANPR Camera (Automatic Number Plate Recognition)

The area committee funded the permanent citing of an infrared camera in Outer North West. The camera checks the insurance and MOT status of all cars passing and will highlight any cars which do not have these in place. Any cars wanted by the Police will also be highlighted and relayed to the monitoring station for action; this could include stolen cars or owners of cars who have outstanding arrest warrants. The running costs for 1 year have now been picked up by West Yorkshire Police.

3.9 CCTV

The area committee funded the permanent citing of several CCTV cameras in Outer North West. The cameras are sited in Otley and Yeadon Town centres and are monitored by LeedsWatch based within Safer Leeds. There are additional cameras in Horsforth.

3.10 Police and Community Together (PACT)

The Police have set up a number of Police and Community Together meetings to work with the community to address key concerns and issues. These meetings are held on a monthly basis within local communities. There are 9 meetings held across the Outer North West Area. Further details are available at the NPT website: <http://www.westyorkshire.police.uk/npt/>.

3.11 Operation Arkansas

This Police lead operation has been running in Otley Town Centre for the last 3 months. The operation is aimed at reducing alcohol related crime and violent crime using high visibility patrols, joint visits to on and off licences with the Council's Licensing Team, drugs operations including the police dogs. This Operation runs in tandem with operation adjacent , where additional officers from response teams come into Otley Town Centre on Friday and Saturday nights to complement the existing team on patrol.

4.0 **Overview of crime figures**

- 4.1 Appendix 1 shows a downward trend in relation to all crimes in the 4 Outer North West Wards; Adel & Wharfedale, Guiseley & Rawdon, Horsforth and Otley & Yeadon. The crimes presented in these figures cover the period April 2004 – March 2009 and relate to all crimes including; fraud & Forgery, handling stolen goods, sexual offences and other thefts.
- 4.2 Crime reduced by 27% with 1703 fewer recorded incidents during this period. The biggest gains were achieved in Horsforth ward (41% reduction). It is important to note that these figures include all crime as mentioned above.

5.0 **Overview of Crime Types**

- 5.1 The subsequent tables will focus specifically on the following crime types: burglary, robbery, theft of and theft from vehicles, criminal damage and violent crime.
- 5.2 Appendix 2 provides an overview of specific crime types. Theft of and criminal damage achieved significant reductions during this reporting period, 43% and 54% reductions respectively. Violent Crime increased during this reporting period with 114 more offences equating to an increase of 15%. The following paragraphs will examine these trends in more detail.
- 5.3 Burglary and Robbery

Throughout the Outer North West Area burglary has reduced by 34% with 334 fewer offences recorded, Appendix 3. Robbery figures have decreased by 13%, with 7 less offences, however, it should be noted that robbery figures a very low and even small increases / decreases will create large percentage variations.

- 5.4 The greatest challenge in relation to burglary is people leaving windows and doors unlocked and in some cases open whilst they are out. Nationally 1 in 4 burglaries (25%) occur using this method, however, in North West Division 40% of burglaries are committed because a door or window has been left unlocked or open. In some areas this figures rises to 50%. Whilst it might be tempting to assume that this is a student phenomenon, statistics show that it is not. It might be more prevalent in the student community because of inexperience, but this type of method of entry for burglaries has a significant presence in all communities and all parts of Leeds. Quite simply, burglary across North West Division would reduce by 40% if people locked doors and windows both whilst they were in the house and when they went out. Considerable

effort goes in to delivering this key message, through discussions, leaflets and PCSOs trying doors and walking into properties to advise on crime prevention. Similarly, The greatest challenge in relation to robbery is people openly carrying laptops, mobile phones or other expensive small gadgets in plain sight and having no regard for personal safety.

5.5 Theft of and Theft from Motor Vehicles

Appendix 4 shows that Theft Of motor vehicle has achieved significant reductions during this period, 43% with over 100 fewer reported incidents during this period. Theft from motor vehicles reduced by 15% with 64 fewer incidents.

- 5.6 Various tactics are used to help get the message about not leaving valuables on display across, examples include: If a PCSO comes across a vehicles where an item is on show they will note the details and arrange for the DVLA to write to the owner and provide some basic crime prevention advice. Temporary notices are also used in the form of the A4 poster frames purchased through well being in 2005/06. These are placed at vehicle crime hotspots to help reinforce the message.

The recently funded Capture Car will be a fantastic asset to be deployed across the Outer North West area.

5.7 Criminal Damage and Violent Crime

During the period of this report recorded criminal damage reduced by 54%, a reduction of 728 offences (Appendix 5). Recorded violent crime increased by 15%, with 114 more offences.

- 5.8 Violent Crime remains a challenging area, particularly in parts of the Outer North West where there is an active night-time economy. The Area Committee recently funded the test purchasing programme, which will assist in reducing alcohol related violent crime. Good working relationships have been established with all the pubwatches in Outer North West and this is used to promote responsible management of licensed premises.
- 5.9 The Divisional Community Safety Partnership has introduced a violent crime sub group which looks at the violent crime hotspots across the North West division and takes takes steps to tackle these issues. This includes looking at good practice elsewhere and implementing new initiatives in North West Division. The priority for Outer North West Division is Otley Town Centre and work has commenced in addressing the issues identified in this report.
- 5.10 The Violent Crime category also includes domestic violence and a Multi Agency Risk Assessment Conference (MARAC) is held every month to look at repeat domestic violence cases.

6.0 Ward Summary

6.1 Adel & Wharfedale

During this period, substantial reductions were achieved in Criminal damage (63%) and Theft Of motor vehicles (50%), Appendix 6. Robbery has increased by 10 offences, which is a 100% increase, due to the low numbers. Violent Crime has also increased by 17 offences, an increase of 11%. However, overall the table shows that crime (in the categories mentioned earlier) has reduced by 35% with 340 fewer offences.

6.2 Guiseley & Rawdon

Appendix 7 shows that Criminal damage reduced by 57%, with 169 fewer offences during the period of this report. Burglary and Theft of motor vehicle also reduced significantly by 24% and 29%, respectively. Theft From motor vehicle has increased by 31 offences (37%). Overall crime amongst these offences has reduced by 186 offences (22%).

6.3 The challenge for this of offence continues to be items left openly on seats. Analysis has shown peak periods for this type of activity and Police patrols have been targeted to key locations, days and times to reduce this type of crime. Where an Officer comes across items on display, they will make attempts to identify the owner of the vehicle (for example if it is parked outside a property) alternatively the registration of the vehicle will be noted and the officer would then contact the DVLA and ask them to write to the owner providing crime prevention advice. Ultimately, this type of offence can be avoided if more care was taken of valuables.

6.4 Horsforth

The majority of crimes reduced during this period, with Criminal Damage, Theft From motor vehicle and Burglary achieving substantial reductions of 61%, 41% and 40%, respectively (Appendix 8). Violent Crime did increase during this period with 25 more offences, an increase of 12%. During this reporting period crime reduced by 36% which equated to 389 fewer recorded offences, in the categories looked at.

6.5 Work is underway to develop a neighbourhood improvement plan for Horsforth, which will aim to address the issues of concern to local residents, as identified through the Police reassurance survey. Multi agency interventions from all partners including; Extended Service, youth Service, west North West Homes, police and Area Management will be co-ordinated to address these concerns.

6.6 Otley & Yeadon

Appendix 9 shows that Theft From reduced by 56%, which equates to 50 fewer offences. Criminal Damage and Burglary also reduced by 36% and 34%, respectively. Violent crime increased by 45 offences, an increase of 18%. Overall crime reduced by 22% with 220 fewer offences in these categories.

7.0 Forward Look

The main priority for Leeds during the coming year is burglary. Leeds has seen a sharp rise in burglary over the last 6 months. A multi agency plan has been put into place and this has had some success leading to a decline in burglary more recently. The challenge ahead is to maintain this decline and partner agencies will continue to work together to meet this challenge.

- 7.1 This report has clearly shown one of the priorities for Outer North West Leeds is violent crime. This issue is threaded across all wards, which have shown an increase in this category during this reporting period. Further analysis shows that this is predominantly focused on the night-time economy. Work in this area has started with Operation Arkansas focusing on the Otley Town Centre hotspot. Multi agency initiatives will continue this effort involving the local pubwatch and the council's Licensing Section, coupled with additional Police patrols and effective use of the CCTV network in place. Persistent offenders will be referred to the ASB Unit with a view to looking at Acceptable Behaviour Contracts and possible tenancy enforcement if they are an West North West Homes tenant. The intention is for Operation Arkansas to be moved to other town centres in Outer North West.

8.0 Conclusion

- 8.1 It is clear that substantial reductions in crime have been achieved in Outer North West during the period April 2004 and March 2009. However, it is fair to predict that there will be significant challenges ahead in a number of areas. The partnership work developed during the period of this report will place us in a promising position to continue to deliver reductions in crime and improvements in community confidence, with continued support from the Outer North West Area Committee.

9.0 Recommendations

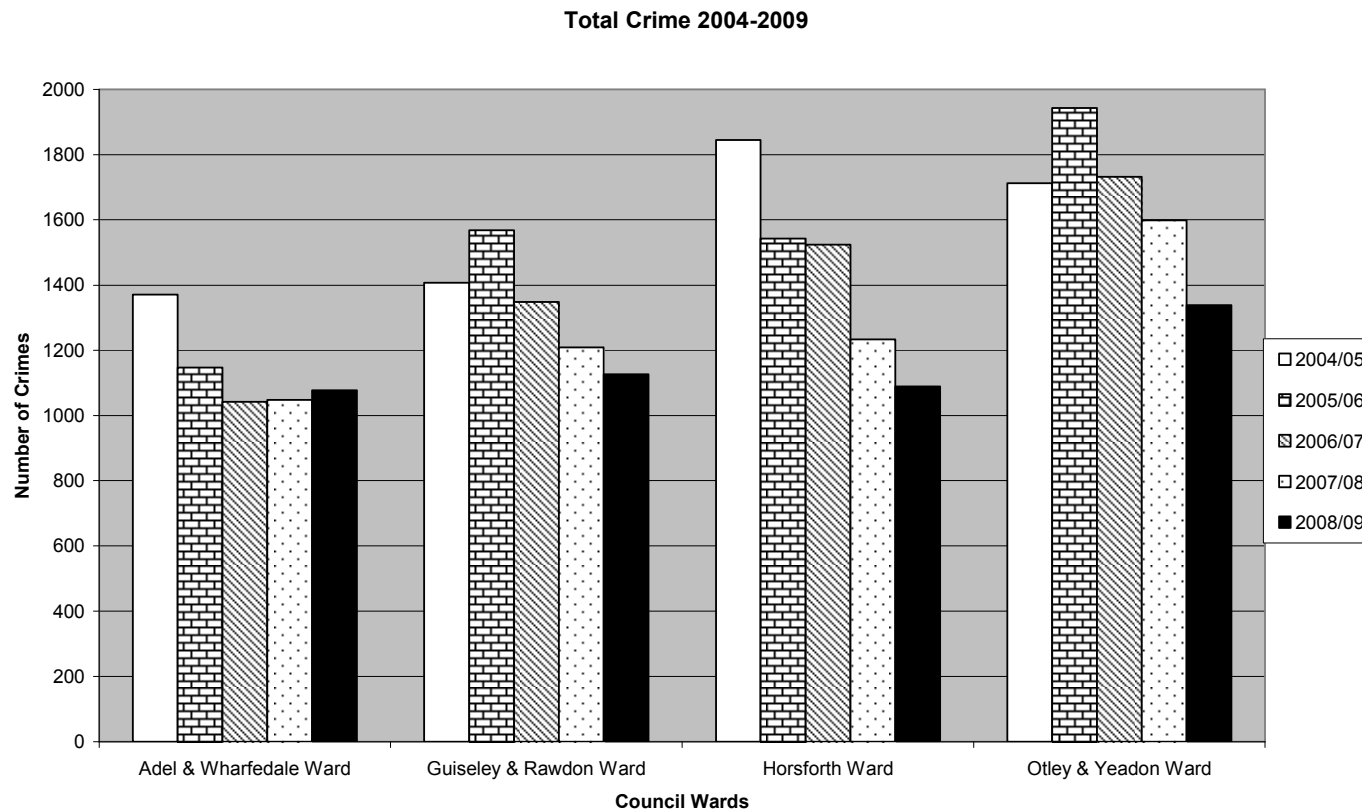
- 9.1 The Area Committee is asked to note the contents of the report.

List of background documents:

None

Appendix 1

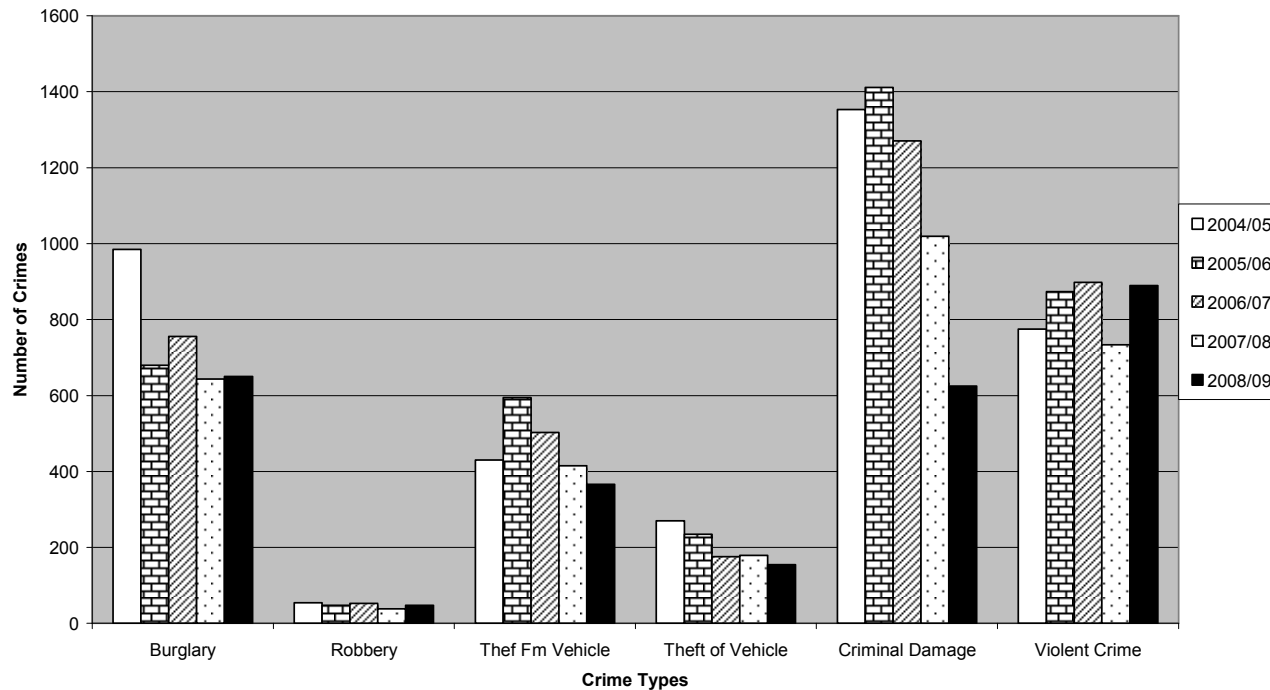
Ward overview	Years					Difference	Reduction
	2004/05	2005/06	2006/07	2007/08	2008/09		
Adel & Wharfedale Ward	1371	1147	1042	1048	1077	294	21%
Guiseley & Rawdon Ward	1407	1568	1349	1209	1127	280	20%
Horsforth Ward	1845	1543	1524	1234	1089	756	41%
Otley & Yeadon Ward	1712	1943	1732	1599	1339	373	22%



Appendix 2

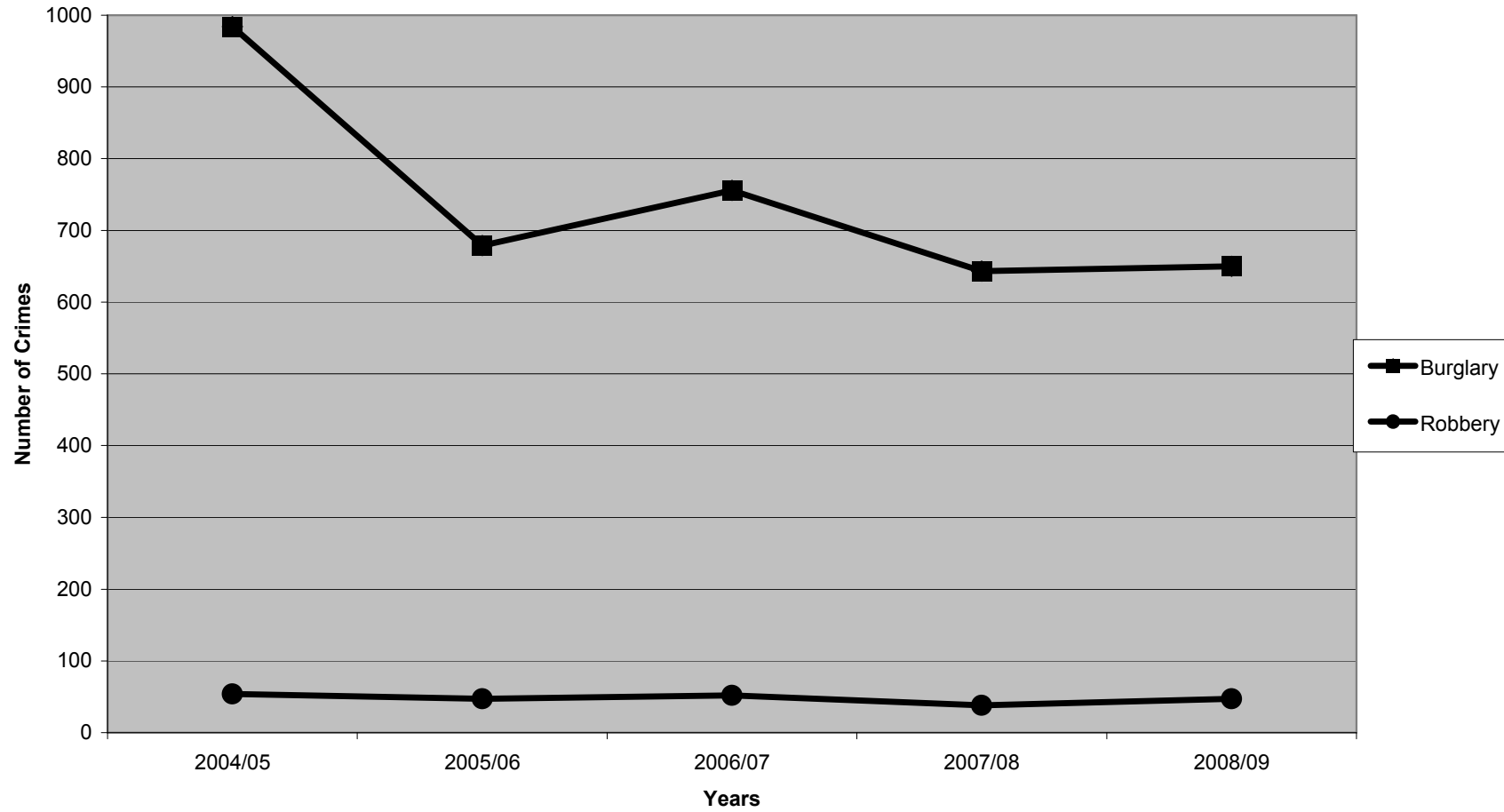
Outer North West Overview	Years						
Crime Types	2004/05	2005/06	2006/07	2007/08	2008/09	Difference	Reduction
Burglary	984	679	756	643	650	334	34%
Robbery	54	47	52	38	47	7	13%
Theft Fm Vehicle	430	594	503	415	366	64	15%
Theft of Vehicle	270	234	175	179	154	116	43%
Criminal Damage	1353	1411	1270	1019	625	728	54%
Violent Crime	775	873	898	733	889	-114	-15%

Crime Type Overview 2004-2009

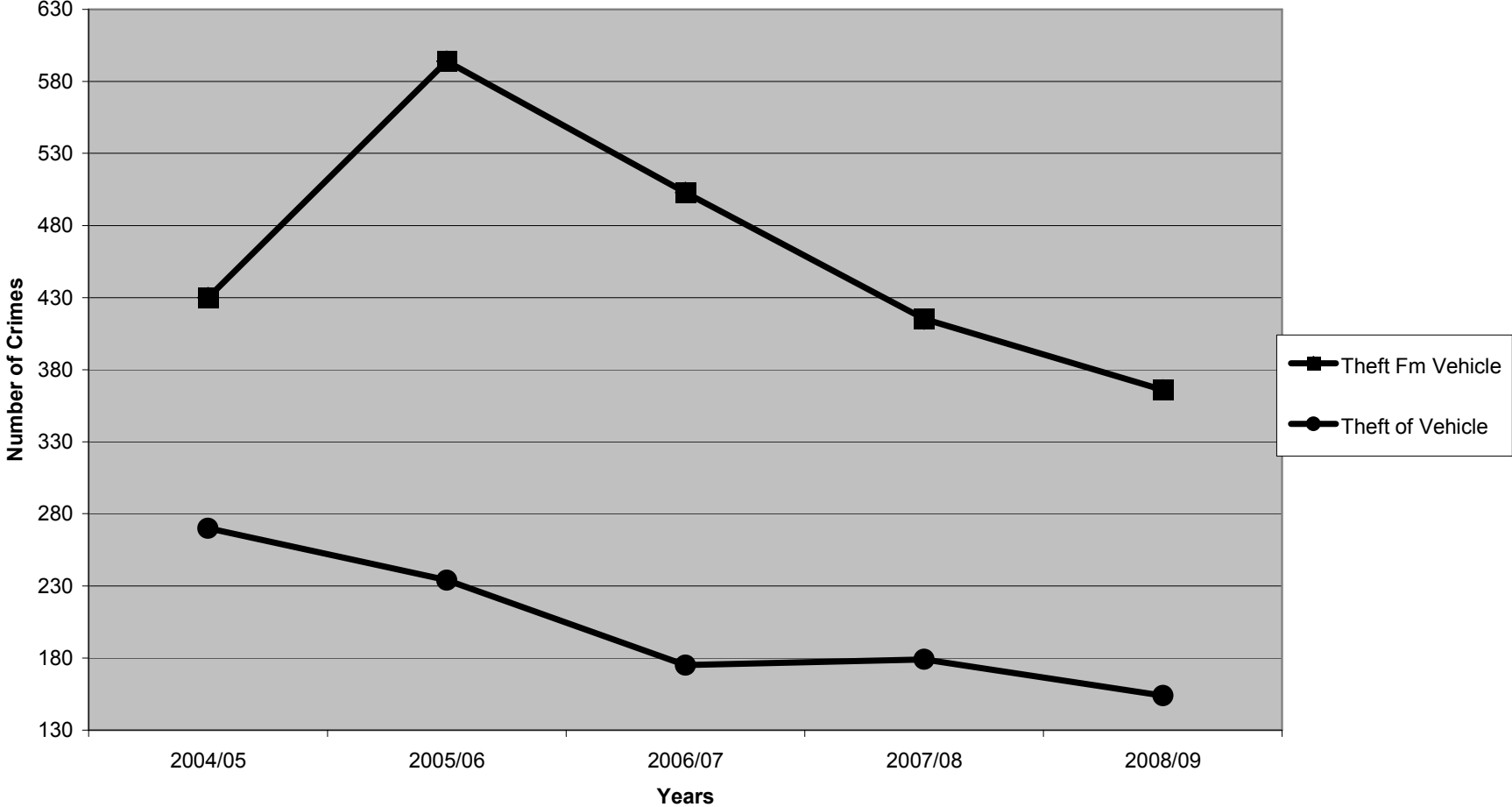


Appendix 3

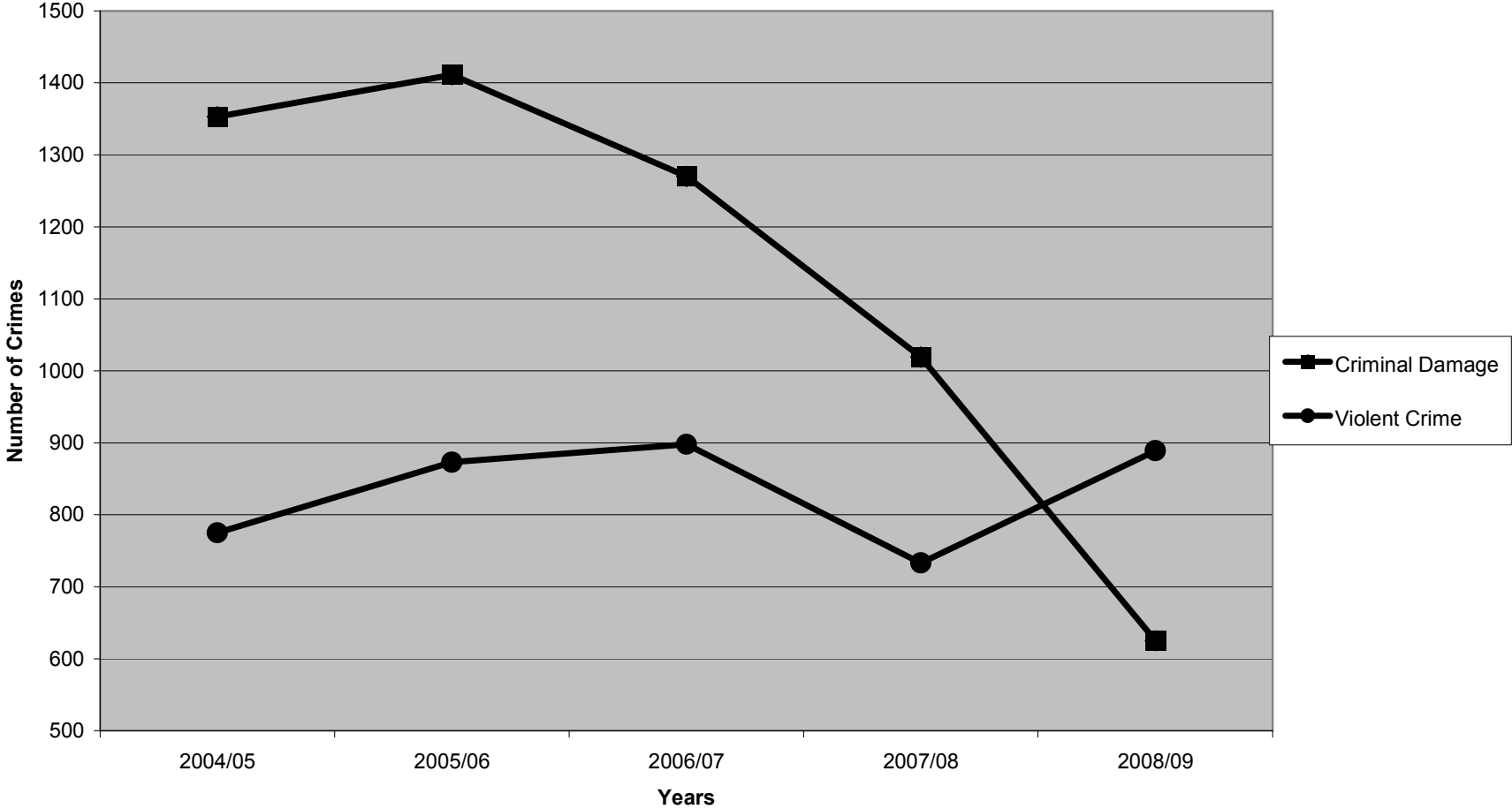
Burglary and Robbery Overview for Outer North West 2004-2009



Vehicle Crime Overview 2004-2009



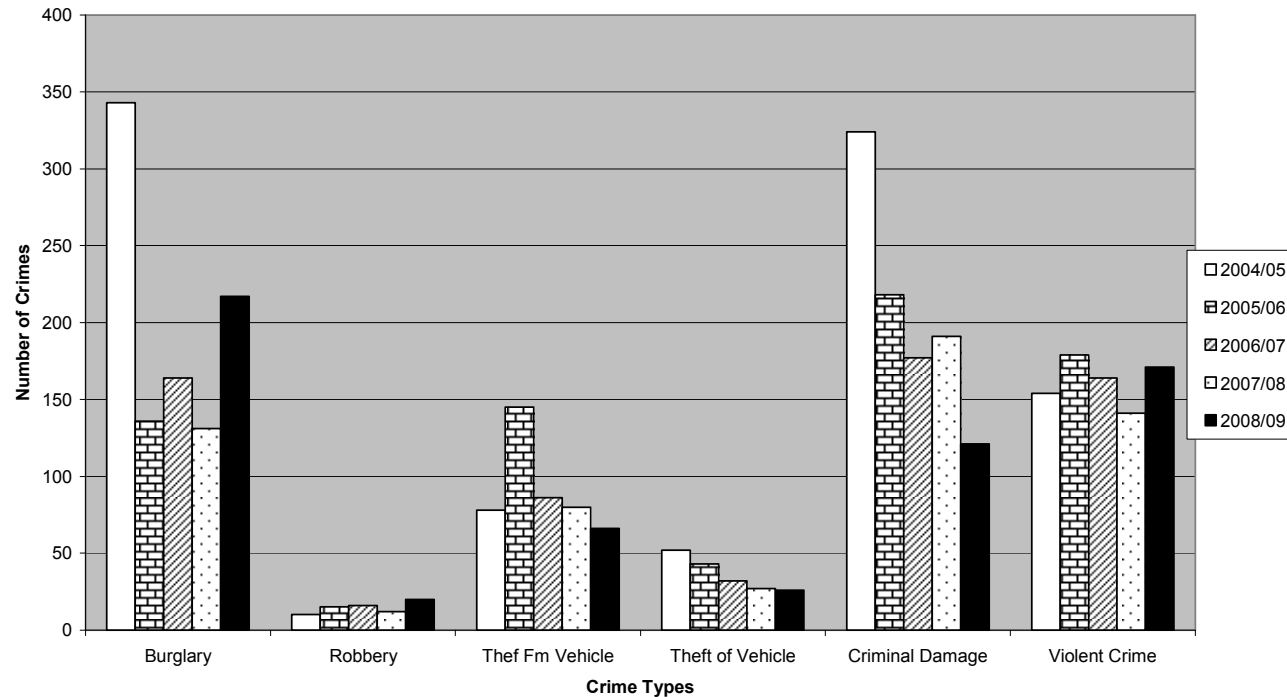
Criminal Damage & Violent Crime Overview 2004-2009



Appendix 6

Adel & Wharfedale Ward Crime Types	Years					Difference	Reduction
	2004/05	2005/06	2006/07	2007/08	2008/09		
Burglary	343	136	164	131	217	126	37%
Robbery	10	15	16	12	20	-10	-100%
Theft Fm Vehicle	78	145	86	80	66	12	15%
Theft of Vehicle	52	43	32	27	26	26	50%
Criminal Damage	324	218	177	191	121	203	63%
Violent Crime	154	179	164	141	171	-17	-11%

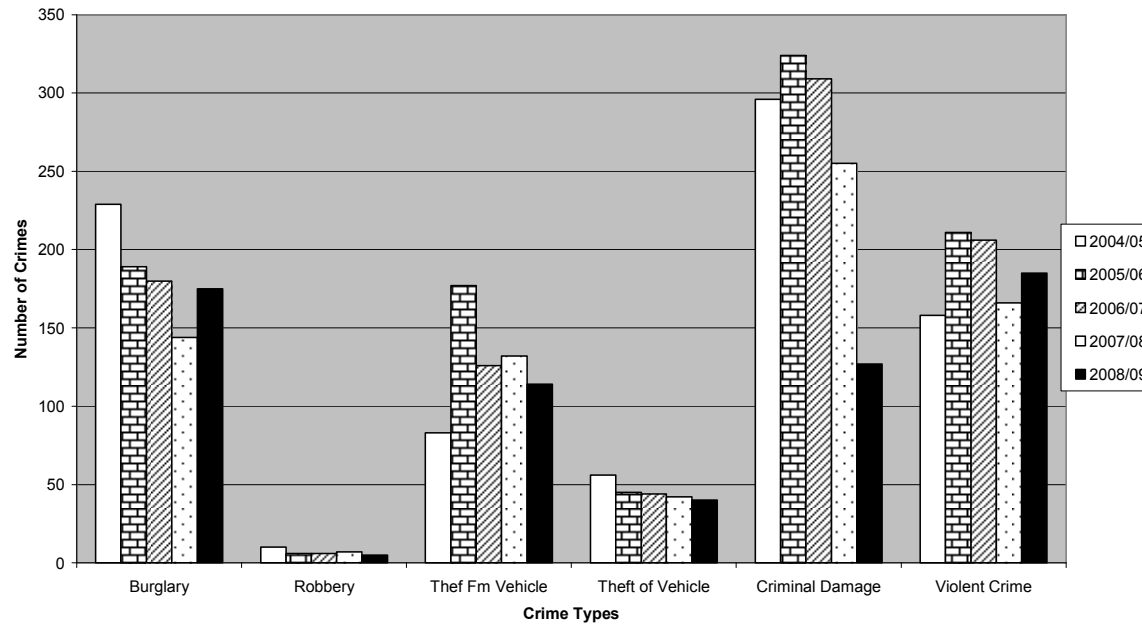
Adel & Wharfedale Ward 2004-2009



Appendix 7

Guiseley & Rawdon Ward Crime Types	Years					Difference	Reduction
	2004/05	2005/06	2006/07	2007/08	2008/09		
Burglary	229	189	180	144	175	54	24%
Robbery	10	6	6	7	5	5	50%
Theft Fm Vehicle	83	177	126	132	114	-31	-37%
Theft of Vehicle	56	45	44	42	40	16	29%
Criminal Damage	296	324	309	255	127	169	57%
Violent Crime	158	211	206	166	185	-27	-17%

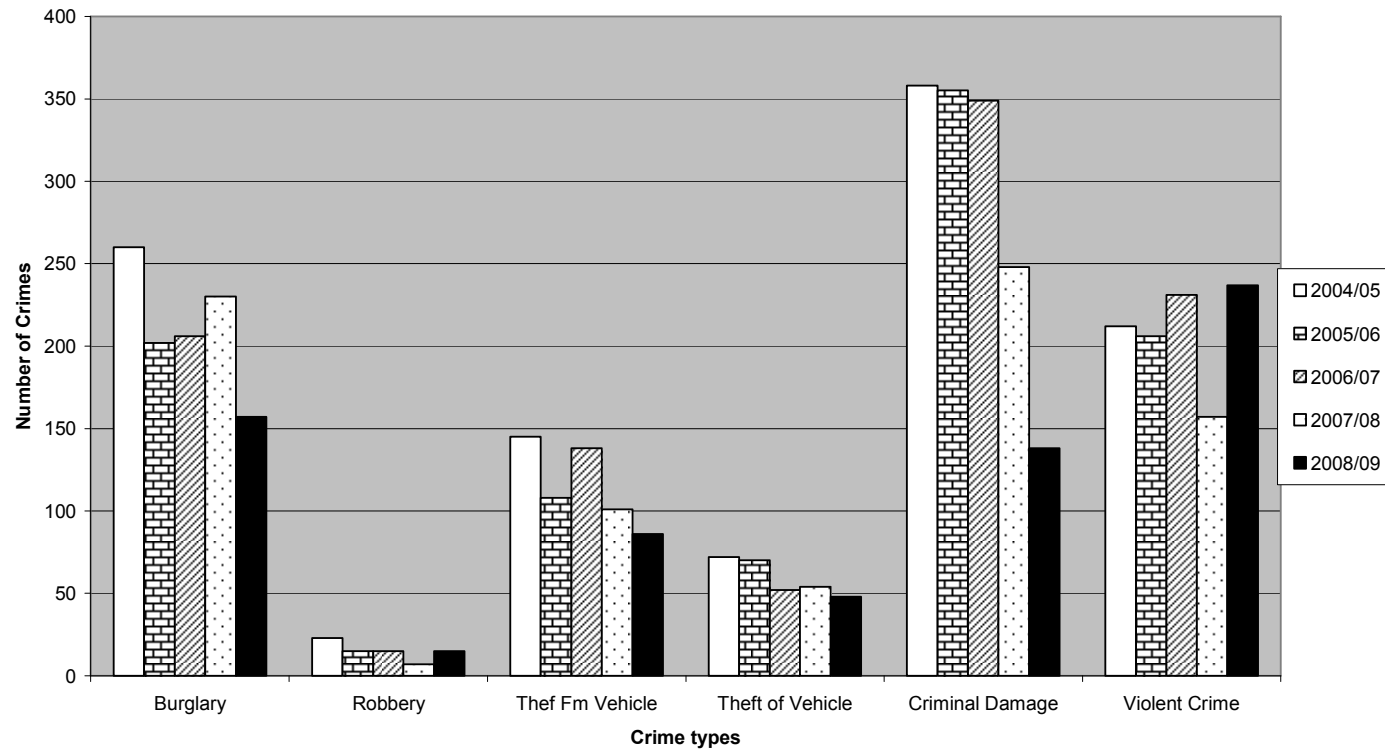
Guiseley & Rawdon Ward 2004-2009



Appendix 8

Horsforth Ward Crime Types	Years					Difference	Reduction
	2004/05	2005/06	2006/07	2007/08	2008/09		
Burglary	260	202	206	230	157	103	40%
Robbery	23	15	15	7	15	8	35%
Theft Fm Vehicle	145	108	138	101	86	59	41%
Theft of Vehicle	72	70	52	54	48	24	33%
Criminal Damage	358	355	349	248	138	220	61%
Violent Crime	212	206	231	157	237	-25	-12%

Horsforth Ward 2004-2009



Appendix 9

Otley & Yeadon Ward Crime Types	Years					Difference	Reduction
	2004/05	2005/06	2006/07	2007/08	2008/09		
Burglary	152	152	206	138	101	51	34%
Robbery	11	11	15	12	7	4	36%
Theft of Vehicle	124	164	153	102	100	24	19%
Theft Fm Vehicle	90	76	47	56	40	50	56%
Criminal Damage	375	514	435	325	239	136	36%
Violent Crime	251	277	297	269	296	-45	-18%

Otley & Yeadon Ward 2004-2009

